

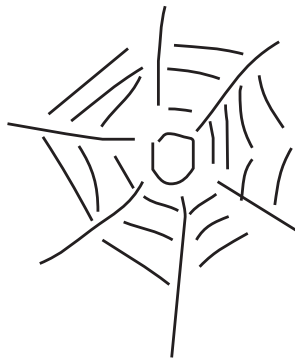
# WHEN FIRST WE PRACTICE TO DECEIVE

*When the world was very, very young, the clever spider Anansi approached Nyame, god of the sky.*

*"Nyame," says Anansi. "My greatest dream is to be god of all the stories that there are. No one spins finer yarns than I, or weaves more intricate plots."*

*"You're right, little Spider," says Nyame. "If you can outwit all of the other animals, I will make you lord of all their stories."*

*And that's exactly what happened, so to this day that trickster Anansi is god of all the stories that there are. Along the way, Anansi accomplished one especially amazing feat. Nyame, knowing the spider liked little more than a full belly, rewarded him for it with a tasty treat. What were the **amazing feat**, and Anansi's **reward**?*



Dear Solvers,

If these Labor Day extravaganzas have had a throughline, it's that I love to share and celebrate stories. Anansi the Spider, god of stories, might sometimes be feckless, greedy, deceitful, and even occasionally gullible himself; nonetheless, given the wealth of stories we have to enjoy, he seems to be doing a pretty good job!

This year's final answer is in two parts, **both** of which must be submitted. When you've arrived at your final answer, please send it to me at markhalpin3 at gmail dot com to score a place on the Leaderboard. The first pair or solo solver to do so will win a \$25 Amazon gift card. An additional solver drawn randomly from all those submitting the correct answer before Monday, September 18th will win a one-year subscription to Joon Pahk's **outside the box** puzzles. At that point, I'll post hints and solutions. If you're not interested in the Leaderboard or prizes, feel free to contact me for hints or nudges at any point. As ever, the point of the thing is to have fun, so if there's anything I can do to facilitate that, please don't hesitate to let me know.

**Be sure to confirm individual puzzle answers via the answer checker, as doing so will reveal valuable information related to the final puzzle.** Online references might prove handy. A piece of research that might be required for one puzzle has proven to be more onerous than fun, so if you **enter a certain 15-letter phrase in the answer checker, you'll be provided with all the information related to that phrase that you'll need.**

After you've confirmed individual puzzle answers, you may email those to me as well; this is not necessary and is purely for my personal interest in tracking progress. All puzzles may be printed to solve, and nothing in this intro relates to the puzzles beyond that which does so overtly. Specific knowledge of the original source material is not required, and flavor text is often clueful.

Happy Solving!

Mark / Zebraboy

# WHEN FIRST WE PRACTICE TO DECEIVE

What was Anansi's most amazing feat?

#'s   #'s   #'s   #'s   #'s   #'s   #'s   #'s   #'s   #'s

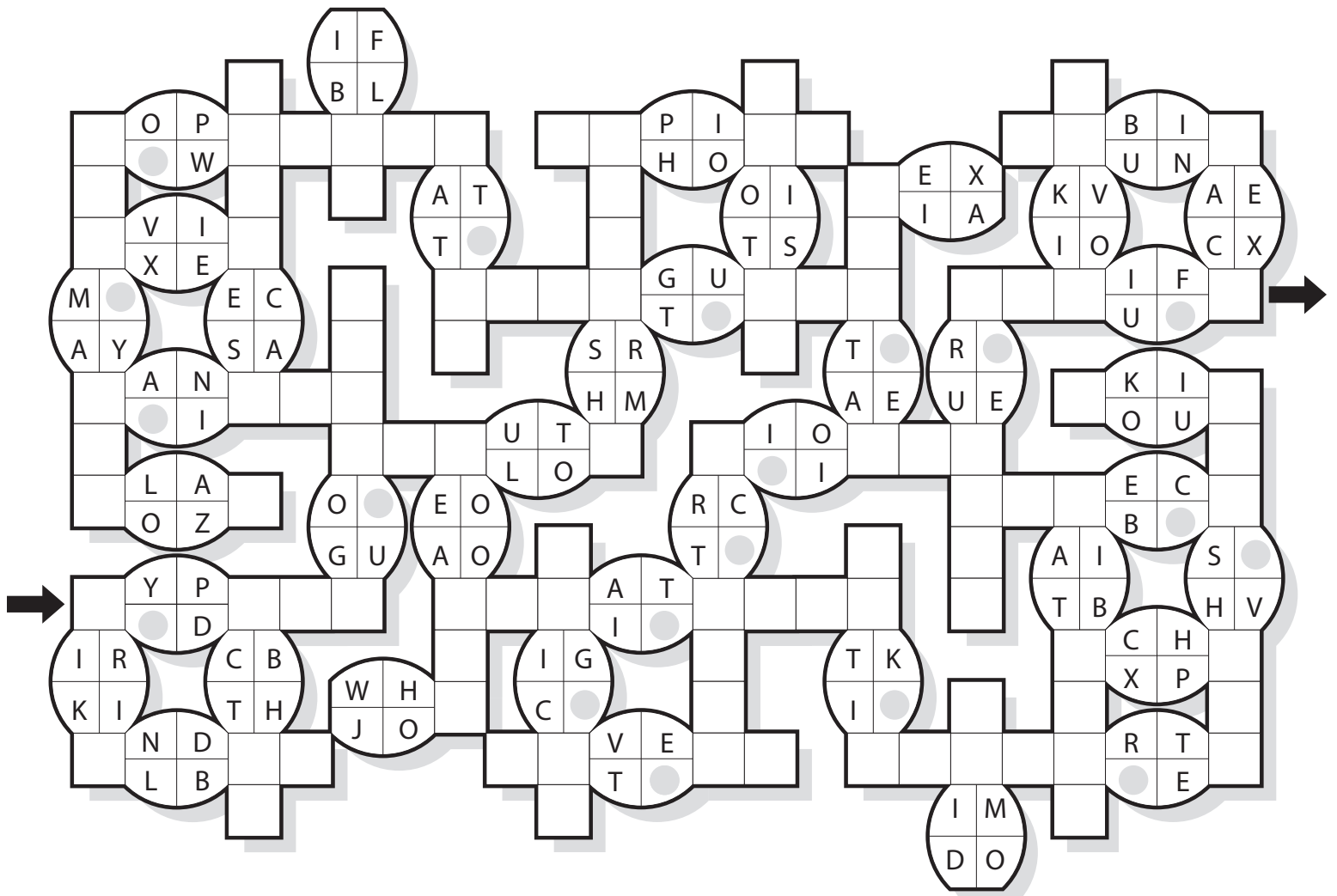
What was his tasty reward?

E's: ● — ● — ● — ● — ●  
B's: ● — ● — ● — ● — ●  
R's: ● — ● — ● — ● — ●  
E's: ● — ● — ● — ● — ●  
E's: ● — ● — ● — ● — ●  
R's: ● — ● — ● — ● — ●  
B's: ● — ● — ● — ● — ●

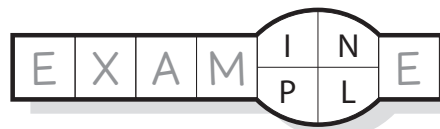
A's: ● — ● — ● — ● — ●  
A's: ● — ● — ● — ● — ●  
O's: ● — ● — ● — ● — ●  
E's: ● — ● — ● — ● — ●  
N's: ● — ● — ● — ● — ●  
N's: ● — ● — ● — ● — ●  
O's: ● — ● — ● — ● — ●

# APE'S PUZZLE

Ape challenged Anansi to a race through the forest. Though Ape kept going faster and faster, Anansi won by taking a devious route.



*Find a path through the forest represented by the grid above, entering and exiting where shown, and visiting every gray dot. Travel along words without backtracking, turning left or right only after having passed though a dot.*





# CAT'S PUZZLE

Anansi had to keep all his wits about him when dealing with Cat, Anansi's particular nemesis. In all of his many shapes and sizes, Cat was truly the most frightening of creatures.



①

AQA  
BLA  
BRI  
BRO  
CAS  
CEA  
CHU

CIL  
CIN  
EGE  
ELL  
ENE  
EQU  
FOT  
FUL  
GOL

LAK  
MAN  
MEO  
MRB  
MYP  
OED  
STO  
UNE  
UPS

②

ABA  
BRI  
DBI  
DSP  
DZI  
ELA  
EST

HEA  
IDE  
IUS  
LOF  
LUG  
NDF  
OPG  
OST  
PAC

PMT  
RAI  
REC  
ROB  
RPR  
RWO  
RYB  
TAT  
TLR

③

AME  
ANK  
ARA  
CID  
DED  
DGE  
DOW

IAN  
ICK  
ICS  
ION  
ION  
IRE  
ISE  
KNI  
LAY

LLA  
OCK  
OOK  
OSI  
OUS  
REX  
RLD  
SER  
ULL

# COBRA'S PUZZLE

Cobra proved difficult to outwit, as his great size and stealth made him more than a match for even the most relentless foe.

1			2	3	4		5
6							7
	8						
	9					10	11
		12		13			
			14	15	16		
		17		18			
19		20					

1						2	3
		4					
			5		6	7	
8					9	10	
11			12				
13		14		15	16		
				17	18		
						19	

				1	2		
3		4				5	
			6	7			
				8			9
		10					
		11	12		13		
	14				15		
16		17		18	19		

## CLUES

- 1E** Ability for whales or dolphins
- 2W** Battery part
- 3W** Domesticate, as a shrew
- 4E** Jilt, as a lover
- 5W** Stealing focus from, in a way
- 6S** Critical trials (2 wds.)
- 7W** Neglectful, as of a duty
- 8N** Snackable soybeans
- 9E** Gus Van Sant's *Psycho*, etc.
- 10S** Sop up
- 11S** High emergency warning (2 wds.)
- 12S** Famous exile site
- 13N** One of Chad's neighbors
- 14S** Small falcon
- 15E** Bloviating one
- 16N** Give out homework or duties
- 17N** Tobacco or coffee mixture
- 18E** Taking longer to traverse, perhaps
- 19N** Acronym for a project seen in *Contact*
- 20W** Blotch to bleach

## CLUES

- 1E** Fatherly
- 2W** Bugged, in a way
- 3W** Momentary pang
- 4S** Milky Way component
- 5W** *Friends* paleontologist
- 6N** Serengeti sight
- 7E** Common Ikea fastener
- 8N** Rely (upon)
- 9E** Prom date, perhaps
- 10N** Disparaging comment
- 11E** TV's Pinkman or (Uncle) Katsopolis
- 11S** Youngsters
- 12E** "The \_\_\_\_\_ who Before us pass'd"
- 13S** Fleshy dangles
- 14N** Shivery fever
- 15W** Mr. Gantry or Fudd
- 16S** One side of a big diamond
- 17W** Private gesture?
- 18N** The third man
- 19E** Had awful BO, maybe

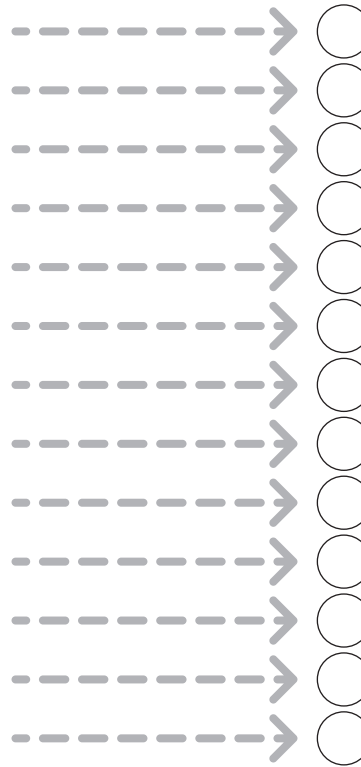
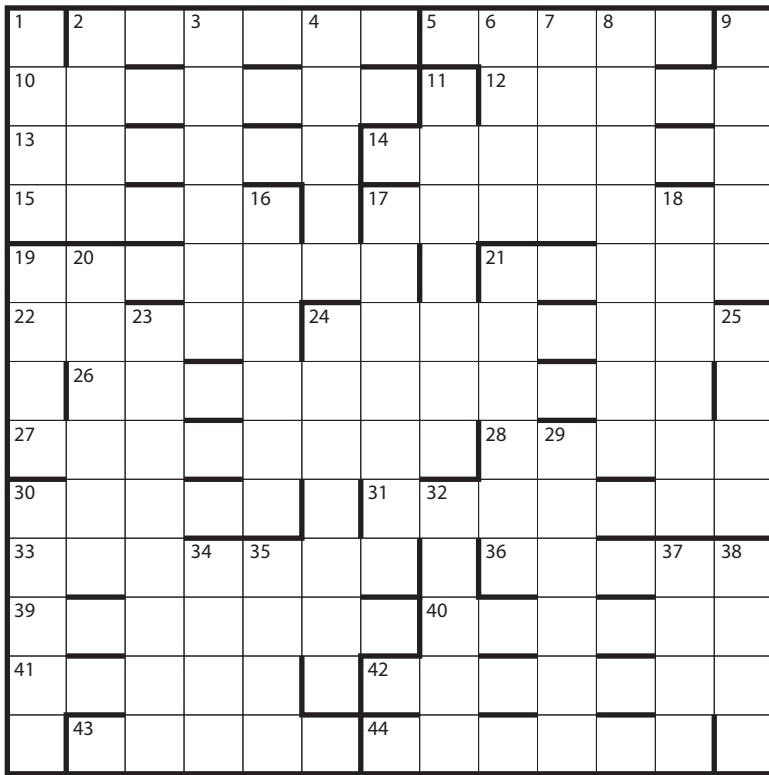
## CLUES

- 1W** Nail polish remover, often
- 2E** Male and female
- 3N** Billfold, for Brits
- 4E** Alloy ingredients
- 5W** Library charge (2 wds.)
- 6W** Sculpture, dance, etc. (2 wds.)
- 7E** English county or spaniel
- 8S** Flyer for a Disney film?
- 9W** Awarded stars, perhaps
- 10N** Covered with filth
- 11S** 2017 Tony-winning play
- 12N** Panhandle
- 13S** Fanzine subjects
- 14N** "Cadillac One" is one (2 wds.)
- 15N** Decathlon prop
- 16E** Popular online matchmaker
- 17E** Quarry for Steve Irwin
- 18W** The priciest seating section
- 19E** Conan Doyle's "Dancing Men", e.g.

Each clue answer begins in its indicated square and proceeds in the direction given, making exactly one right angle turn somewhere along its length. Each grid also contains a Cobra, which is larger (making multiple turns) and more stealthy (unclued) than the other entries. Each grid square is used in exactly two entries.

# DOG'S PUZZLE

Dog was such a friendly, sloppily affectionate fellow that Anansi almost felt bad about how easy he was to fool (just pretending to throw things usually did the trick).



One Across answer in each row will throw a single letter to the far right of the grid before entry, resulting in a new, common word to be entered in the grid. Go chase those letters! Good boy!

## ACROSS

- 2 Spare tire Erik Estrada's *CHiPS* character mentioned
- 5 Moral failing is something that the tooth fairy might go for
- 10 One clan crafted delicate French lace
- 12 Bird is cuckoo or hen
- 13 Majority of men beginning to admit Stallone is puny
- 14 Irish county lass finished early
- 15 Fruit seen in baby food ... that's so cute
- 17 Bother to get excited about Eastern religious film (2 wds.)
- 19 Fur coat involved in part of a long drama (2 wds.)
- 21 Prepared to bowl more splits, spares, etc.
- 22 It's fine to be included in each World Series game
- 24 Saltily treating *101 Dalmatians* - opening included - to insult
- 26 "More than one programmer's figure lacks abs!" she snarled
- 27 Symbol redesigned to show (essentially) energy with gravity
- 28 Some records concerning big name in printing
- 30 USAF member shot rifle
- 31 Stud, perhaps, is angrier, out of control
- 33 Spooner's cook directed where to find low-level fish? (2 wds.)
- 36 Iniquity dating from the time of Christ and subsequently
- 39 Alone at resort in France, for one
- 40 Dude from the Caribbean island is a social climber?
- 41 Cirque du Soleil show with lots of animals: it might generate buzz
- 42 Be terrified about trapping the boa, in part
- 43 Art class deconstructing "green"
- 44 Fighting over suspension bridge

## DOWN

- 1 Very brief need for a rocker to play the same music over and over and over
- 2 Strangely pale defendant's utterance
- 3 Cavorting fauns are ultimately likely to get you in trouble
- 4 Giant water rat is kittenish little pet? Not quite
- 6 In Heidelberg, without one morsel of hasenpfeffer consumed
- 7 Rewound part of a film to take a salacious look
- 8 Rich merchant ships like hosting debauched orgies
- 9 "Sound is not language," explain talking heads
- 11 Jacobean dramatist's elation interrupted by injured hand (2 wds.)
- 16 Craftsman aroused embracing Rex and Romeo
- 17 PC maker, a wee bit upset, posted inflammatory comments online
- 18 *Bones* cast joined by *NCIS* lead and *Law & Order: SVU* detective
- 19 Tarzan was raised by some lampreys, ignoring the odds
- 20 Tropical tree providing couple of botanicals in soft drink
- 21 Support for a choir and kindergarten lost by gamblers
- 23 Droll Black Sabbath singer sounded suicidal
- 24 Begin, e.g. rerouting airlines. No? No.
- 25 Part of an orchestra's successful without yours truly
- 29 Some artwork a fine fellow described
- 30 Criticism at club's tending to break up
- 32 Set one's sights on poet cummings or singer Mann
- 34 Old school letter getting sent back
- 35 Show disapproval for real vulgarian
- 37 Average grades are appropriate, reportedly
- 38 One beholding, embracing Rochester at last!

# GULL'S PUZZLE

Anansi had to stay sharp to outwit a creature whose very name meant to cheat, con, swindle ...

BL	SL	HO	IT	IP
TH	PS	MA	FL	TY
PI	UN	ES	VE	IN
NO	RE	TH	SP	DE
PO	AS	IE	LI	IC

... TRICK ...

TA	ND	AH	LA	GE
BR	LW	AB	NA	OD
EL	TU	SA	AN	AL
WI	ED	HE	WO	ID
LI	IY	MO	VA	ON

... KID ...

GO	WB	FR	VE	OP
JA	PP	TO	EP	ER
PE	OT	SA	AK	TS
LI	BE	SI	MI	ER
TE	FE	RF	PP	NT

... SUCKER ...

KI	AU	PL	IL	SK
LA	IE	NS	UQ	LE
AM	ND	TE	HO	UA
UG	KE	YV	BU	ID
CH	DE	ER	AQ	RG

... BUFFALO ...














IR	PA	GS	DD	ME
KR	MA	YC	GA	CH
CR	LO	BL	OU	EL
CA	IE	OS	TI	ON
BA	AZ	GE	AN	SE

... ROOK ...



# HORSE'S PUZZLE

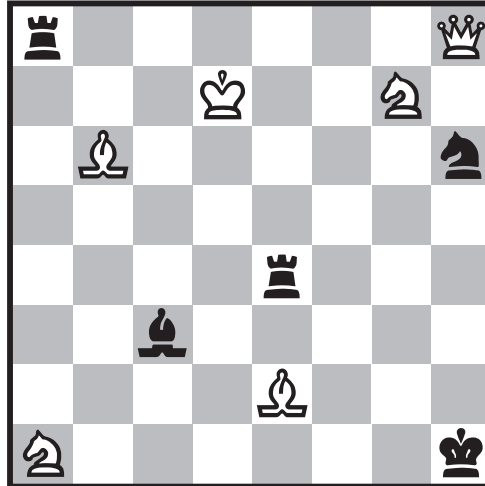
The tricky way Anansi played games was something that Horse, who was a noble sort, would never have dreamed of.

ANSWER:             

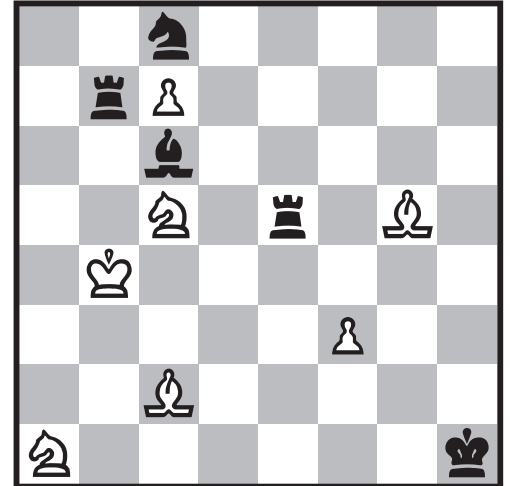
White and Black alternate turns.

It is White's turn, moving up the board.

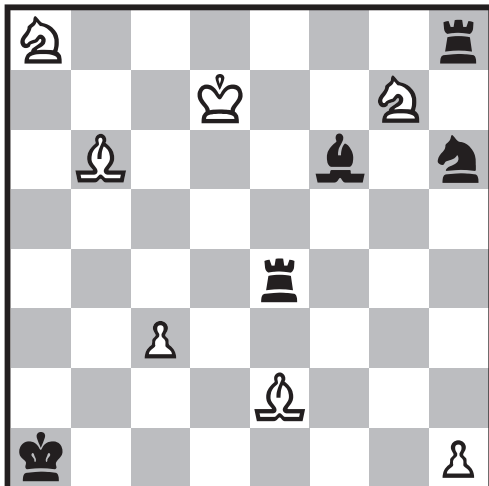
Boards are numbered for convenience only.



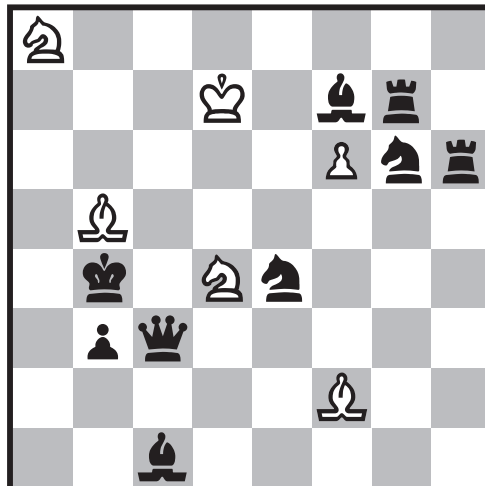
1.



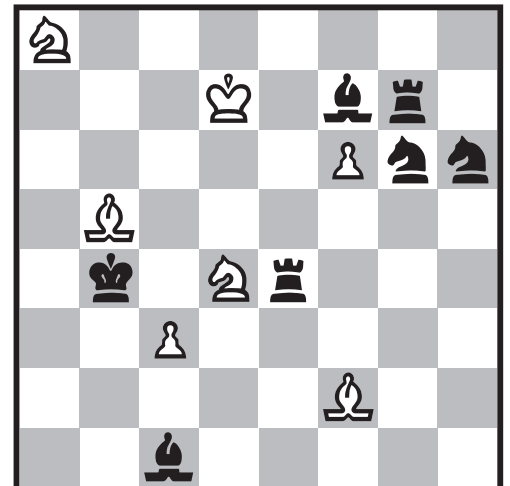
2.



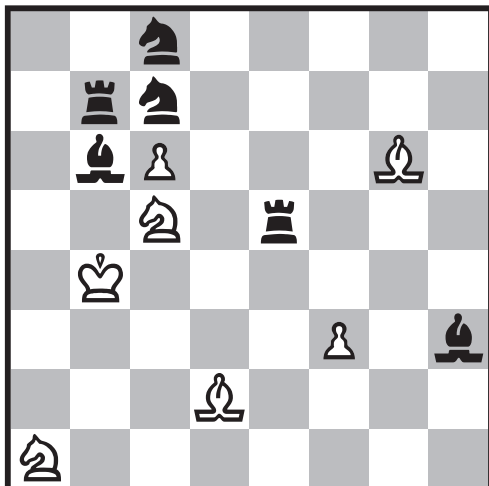
3.



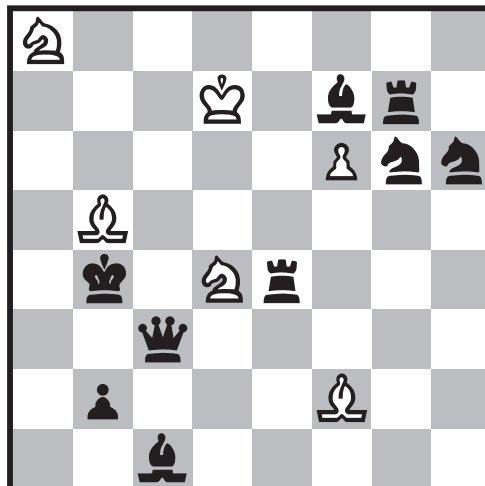
4.



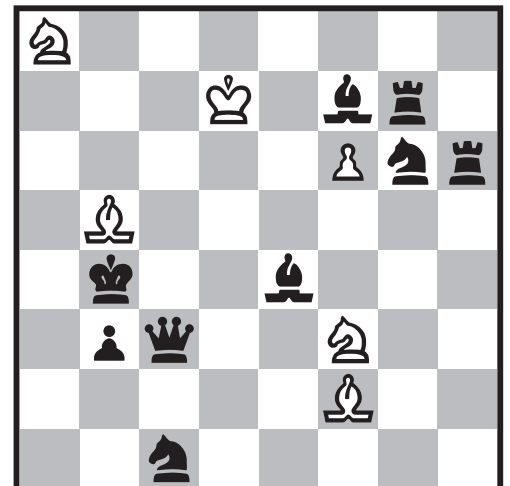
5.



6.



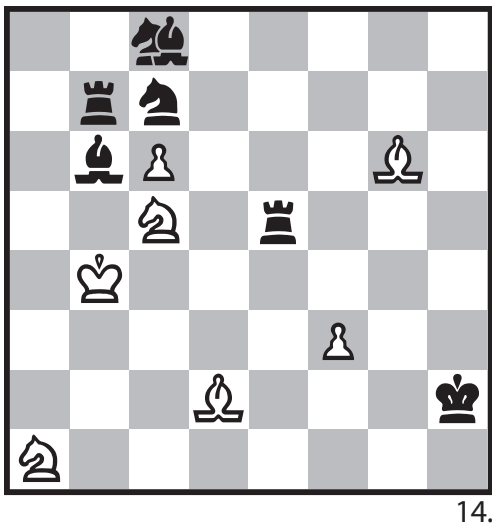
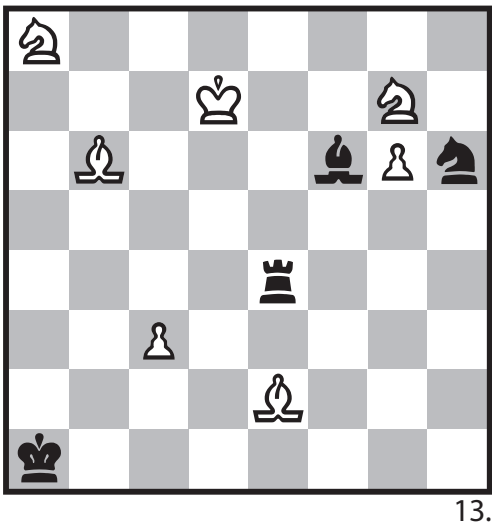
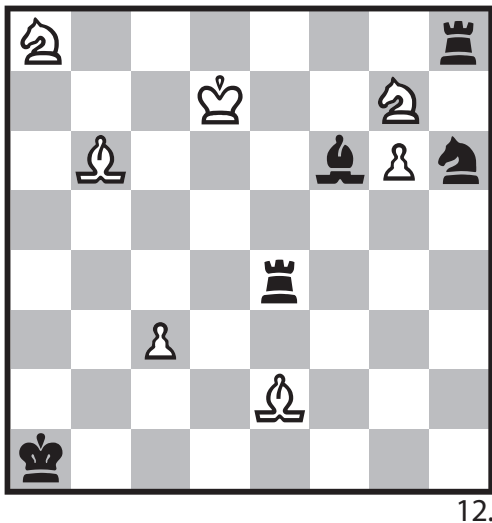
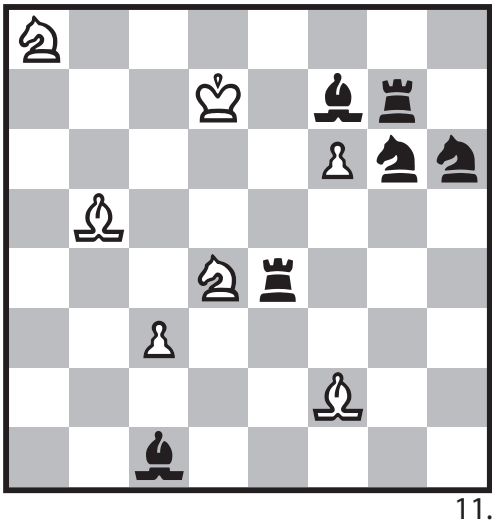
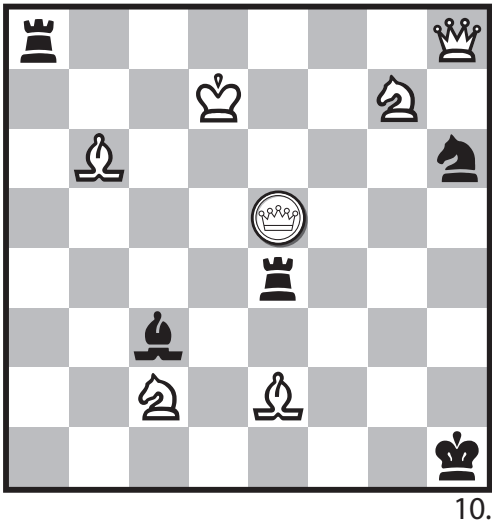
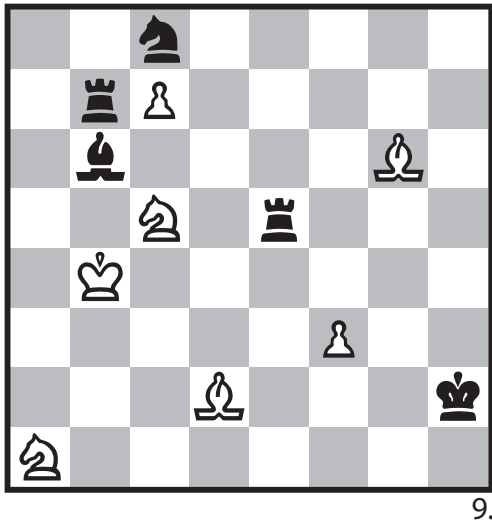
7.



8.



Horse's Puzzle – continued

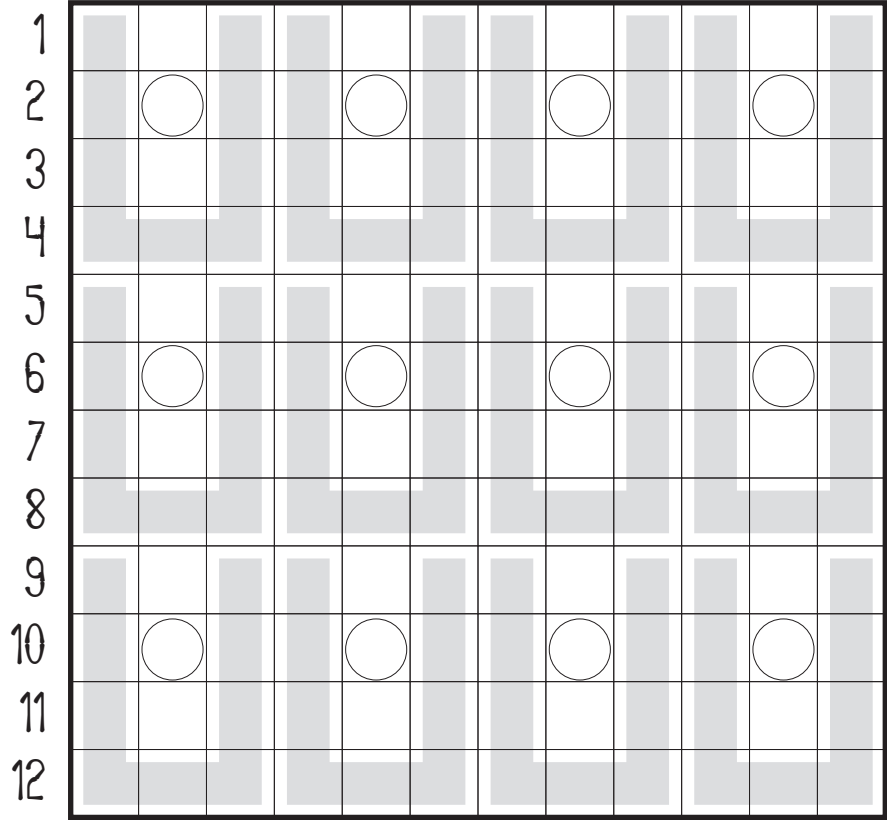


E	R	O	I	E	E	T	L	E	E	E	U
N	E	F	C	I	K	S	P	C	R	T	A
O	L	S	G	Q	R	R	S	A	C	S	R
N	S	I	G	E	H	U	I	E	R	D	B
B	S	D	Y	A	N	L	O	E	I	Q	E
E	U	A	T	T		N	E	U	L	R	D
I	U	H	L	T	I	E	F	R	F	N	Y
E	R	A	L	S	L	B	C	C	H	U	O
B	S	L	E	T	I	T	I	E	E	U	A
E	F	R	R	C	E	A	R	A	H	E	G
E	C	O	Y	C	I	O	T	F	A	D	Q
N	H	I	R	N	L	A	Y	T	R	I	K

B \_ \_ \_ \_ \_  
C \_ \_ \_ \_ \_ \_ \_ \_  
E \_ \_ \_ \_ \_ \_  
F \_ \_ \_ \_ \_ \_ \_ \_  
F \_ \_ \_ \_ \_ \_ \_ \_  
H \_ \_ \_ \_  
H \_ \_ \_ \_ \_ \_ \_  
I \_ \_ \_ \_ \_ \_ \_ \_ \_  
P \_ \_ \_ \_ \_ \_ \_ \_  
R \_ \_ \_ \_ \_ \_ \_ \_  
S \_ \_ \_ \_  
S \_ \_ \_ \_ \_ \_ \_ \_ \_ \_  
U \_ \_ \_ \_ \_ \_ \_ \_ \_

# OWL'S PUZZLE

Owl, who was something of a natural philosopher, stored grains of interesting materials in clay pots. He challenged Anansi to sort and identify them all.



## ROWS

- 1 Order Strigiformes members / GPS offering / Edit or tailor
- 2 Parsimony or vulgarity / Luke and Daisy's kin / Saucer, perhaps
- 3 Notable censor / Approximately / Club choice
- 4 Computer address, for short / Bond type / Fasten anew
- 5 Airborne annoyance / Gain / Dip or dance
- 6 Emulate Thespis / A moon of Jupiter / It faces New York, New York (2 wds.)
- 7 Freshen up a tattoo / Penn Stn. line / *Foucault's Pendulum* author
- 8 Article / Some DVRs / Hump day eponym
- 9 It may be pale or ginger / "Sure, amigo" / Most collected
- 10 Willowy / Form a vault over (*obs.*) / Tawny
- 11 Govt. security (*hyph.*) / Visitors from afar / Zip
- 12 Heater / Exist / Transported via carts

## POTS

- Fait accompli or finalized agreement (3 wds.)
- It may stand for "implies that" or warn of hairpin turns (2 wds.)
- Houston's landmark sports venue
- One's rowing team cohorts
- Certified Italian, as with a DOCG label
- McDonald's ad catchphrase (3 wds.)
- WHAT THIS CLUE'S NINETY-FOUR PERCENT Not
- Located at the back of the skull, like some lobes
- Like stop signs or the Dome of the Rock
- Weathered a crisis through endurance (3 wds.)
- Most foolishly romantic or sentimental
- Product identifier, such as Teflon (2 wds.)

The three Row answers are entered in the order given in their respective rows. Pot answers, which are all nine letters long, are to be entered in any shaded pot, beginning at either end. Pot clues are ordered alphabetically by answer.

# PIG'S PUZZLE

If there was one thing Anansi could be relied on to take care of, it was filling his ever-increasing belly. Once he beat Pig in an eating contest by sneakily stealing bits of food that didn't belong to him (which went against even Pig's code of conduct).

I	P	E	K	A	C	N	W	E	R	F	P	K	A	E	L	U	O	G	N	A
L	E	N	O	I	N	O	O	N	A	N	D	S	Q	U	A	B	O	U	I	I
O	A	S	C	E	V	H	D	C	E	T	O	S	T	H	S	A	L	H	L	R
I	C	O	U	P	I	P	E	D	L	R	O	A	D	O	U	X	V	U	L	A
G	H	A	E	H	C	A	B	I	B	B	W	A	L	R	S	F	A	N	A	G
E	C	F	E	A	T	S	A	S	P	U	B	Y	G	M	I	S	R	G	B	A
S	O	B	A	V	A	L	K	S	U	E	O	R	R	A	D	A	L	A	D	I
E	E	B	C	U	B	A	N	E	H	L	P	T	I	E	E	C	O	E	S	S
T	H	L	C	D	N	A	S	I	S	U	P	A	E	P	D	I	Q	A	U	V
O	G	E	A	C	O	C	A	R	F	O	N	A	N	H	G	S	H	P	I	I
P	R	R	Y	U	M	A	N	D	W	I	C	A	I	P	A	B	A	B	Z	N
E	A	E	A	B	O	S	S	O	Y	L	H	R	S	J	T	R	E	T	S	B
K	C	H	L	A	T	C	I	D	E	R	U	U	E	U	H	R	A	N	Z	O
E	S	C	E	L	E	D	E	C	N	E	C	P	I	B	E	A	L	F	A	L
I	J	A	M	B	U	O	B	L	C	H	E	R	R	I	R	T	A	T	O	U
N	G	D	T	O	F	S	D	U	T	B	S	M	E	L	M	I	D	O	R	I
H	O	U	P	I	C	T	C	A	I	L	G	G	T	E	E	D	I	N	G	S
C	S	C	L	V	Q	O	F	T	A	P	S	E	N	A	B	D	U	P	F	L
A	A	K	A	E	U	N	I	L	Y	N	A	N	A	M	I	T	L	A	O	L
P	D	A	L	I	I	C	T	E	A	W	R	R	Y	B	T	O	N	S	N	E
E	I	P	M	A	E	R	M	A	T	B	E	C	S	O	G	N	I	K	E	R
Z	E	N	C	H	C	G	I	G	A	W	A	C	H	W	E	L	L	R	E	A
A	A	R	R	O	H	N	S	T	R	B	E	E	O	F	S	A	U	E	U	U
G	I	N	E	L	E	O	N	I	L	L	U	M	R	T	C	A	K	E	Q	T

4 8	13	5 8	10	8	7 9	5 7	6 8	7
7	6 3 6	5 5	8	7	3 3 6	6 4	11	8
6 5	7	4-4 5	5 6	4	12	9 6-4 4	11	4
4 10	8 7	5 2 5	4	9 7	4 4	3 5	10	4 7
6 5 3	3 2 3	4 8	6 5 4	9	5 1 7	5 2 8	10 9	7 5

Enumerations are given for grid items in alphabetical order column by column.

# RABBIT'S PUZZLE

Rabbit was also a pretty notorious trickster, and in later years he'd steal some of Anansi's own stories for himself. One of the best known was the one where Anansi got fooled into sticking himself to a doll made from gum, even though that gum-baby's parts weren't quite perfect (and by the time Anansi got unstuck, barely human-looking).

AALPYBETWITYTYEELETTRSKSAMEYNZAYIANDLGIME

BIYGIYIGHTISDOMIYOSPIZZAADVRTISMYTS

CECKOTRDELYOLCHEROUSLY

CREAKIGNCDAMAWYREXHMOZODUCETTREDALL

DDESIAREEGDERROYSSASKKLATKCAB

FRHQUHNTLYGMCHANGHDGMGARMHNTGMFORGMNHWBORNGMBABIHSGM

GENUSKAPPAOBLAMBDABRUITMUTREESNUBEARINGXIBIGSOMICRON

HASRPSHARPORFKFORKARPTPART

HOWRISNVOLVINGRIINRIACEANICRIOIRLINESRIARASHRIC

MISICILINSTRIMINTISIDTIPLIYTHIFIMIISTHIMIFRIMJIWS

OLISTENDOOOAOCOUTOCAEOAGAN

OHARDENTPENULTIMATEOWTNOTEERHFINRUOFTHEEVISTENORXISARIANEVEEENESSUNTHGINDORMAENI

PEEUORGFEEOSEEEVLWSEEETTERAGICREEOSEEDRAC

POCCOSCHACPEDICACORSPIGHCPUCCER

QPERSONEDOINGTSUMSPORBAWVIPER

REHTONADROWROFTSEEBEDLIW

SOSSESSELOTSGUOTGETHOTTSWISEDOSTREOTLLYSPEOTK

SSEIVPPVIIMEVIRRVIIIOONEYVIII

WFILPMWMADPEWOUTPSIDEWTHEPWSTUPDIOWSYSPTMWBRIPEFLY

YRALLELUEFUSGTLKINAKTNAEEGINN

\_ ( ) \_ \_ \_ \_ \_ / \_ \_ \_ ( ) \_ \_ / \_ \_ \_ ( ) \_ \_ / ( ) \_ \_ \_ = ?

# RAVEN'S PUZZLE

Raven challenged Anansi to find the trinkets and shiny objects he'd stashed away over a number of months.

C	C	A	D	E	A	E	D	A	E	D	E	E	A	E	A	E	A	E	C	C	E	E	I	
H	E	E	P	E	A	E	E	O	N	M	E	E	H	I	D	E	C	H	E	I	J	I	M	I
H	E	S	R	E	D	E	O	P	O	N	R	F	L	L	H	M	P	H	I	I	O	O	P	O
I	G	U	T	H	E	I		T	O	S		H	O	N	L	N	T	R	R	N	S	R	V	P
P	K	W	T	S	L	O			S	U		I	T	T	P	O	T	T	R	S	S	T		T
S	O			V	R	P			S	U		T	U	X	X		Y	T	T		X			Y
R					R	R			U	W								U						Y

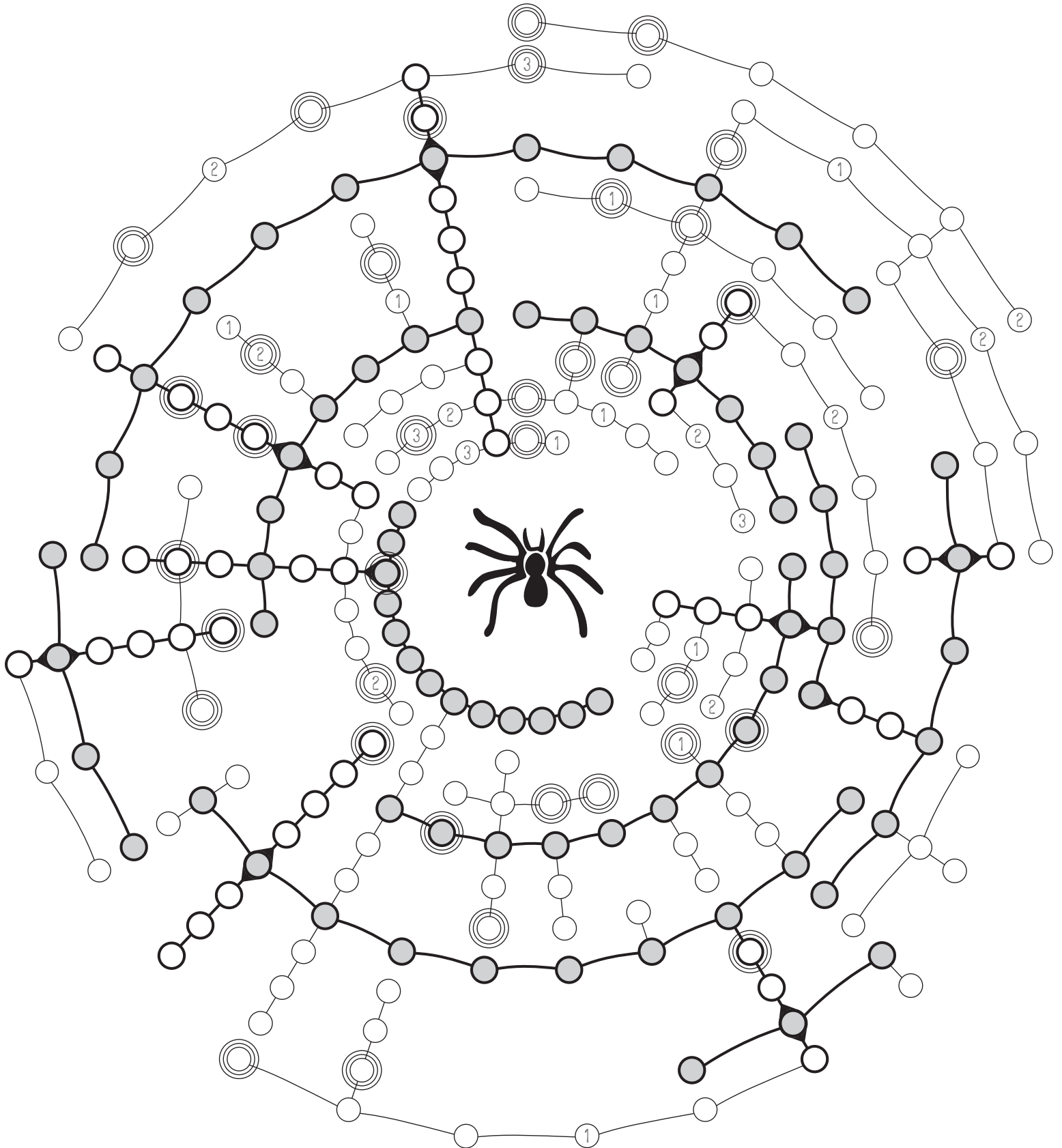
{ } =?  
 { } =?  
 { } =?  
 { } =?  
 { } =?

American naval vessel • Ancient dynasty • Bakery supply • Classic musical • Cole Porter song  
 Comic opera • English novelist & philosopher • Entertainment provider • Folk singer • French politician  
 Gigantic statue • Island nation • Ointment brand • Starchy item • Type of printer



# ANANSI'S WEB

Anansi's greatest dream inspired his novel approach to web design.



All entries in the grid run clockwise or inward.